

Sliding door system / bottom running

- ▶ SlideLine M / overlay door position
- ▶ All the benefits at a glance



Design upgrade for furniture. SlideLine M upgrades the practical value and design of furniture. Living room units and shelf systems. Kitchen wall units and bathroom furniture. And, of course, office cabinets too. The versatile system is suitable for all common furniture constructions. Wooden, glass or aluminium framed doors weighing up to

30 kg can be installed quickly and easily. Profiles are available for several shelf thicknesses. Sliding doors running one in front of the other in one profile are also easy to produce. The Silent System is integrated on the running component and slows down door running action in closing, opening and colliding direction.



Including a feel of luxury: Silent System lets doors open and close quietly and gently. Where several doors run side by side in one profile, they can even be slowed down as they move towards each other.



All design options open: can be used for wooden, aluminium framed or glass doors.



Spot on: perfectly align sliding doors – with the integrated height adjustment (+/- 2 mm).



Easy and fast: profiles are simply screw mounted to the assembled carcass.

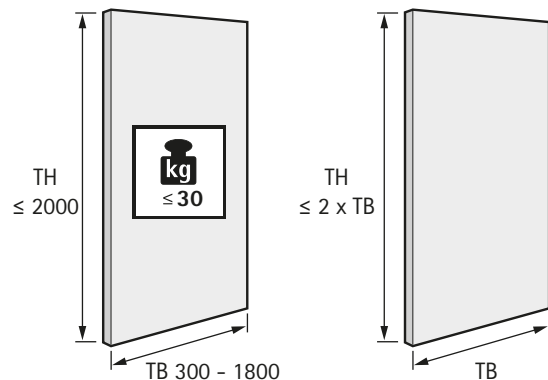
Sliding door system / bottom running

- ▶ SlideLine M / overlay door position
- ▶ Performance summary

Technical details in brief

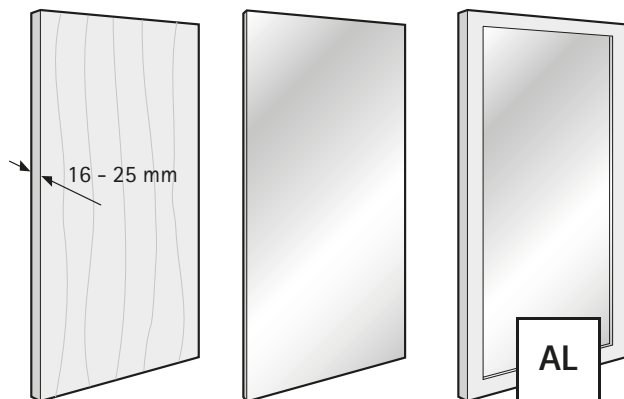
- ▶ 1-track, bottom running sliding door system
- ▶ Overlay door position
- ▶ Wooden, glass or aluminium framed doors
- ▶ Door weight up to 30 kg
- ▶ Door height up to 2000 mm
- ▶ Door width from 300 - 1800 mm
- ▶ Shelf thicknesses 15, 16, 18, 19, 22, 25 mm
- ▶ Height adjustment +/- 2 mm
- ▶ Silent System in closing, opening and colliding direction
- ▶ Tool-less fast installation of the front panel
- ▶ Tested to EN 15706, Level 1 or 3

Door size and door weight



TB	300	400	500	600	700	800	900	1000	...	1800	
TH ≤	600	800	1000	1200	1400	1600	1800	2000	...	2000	

Door material



Number of door wings and door position



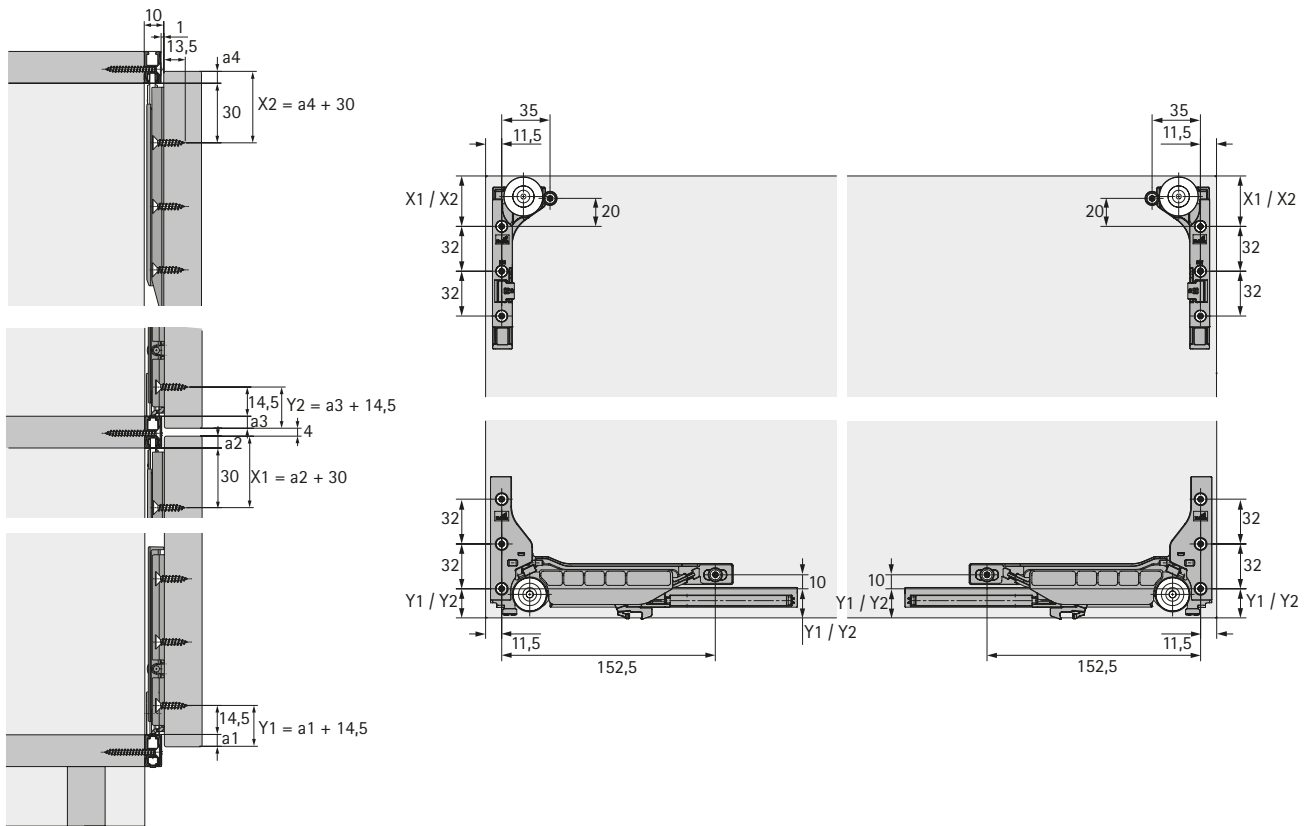
Silent System

	1-door	with several doors
Soft closing		
Soft opening		
Soft colliding		

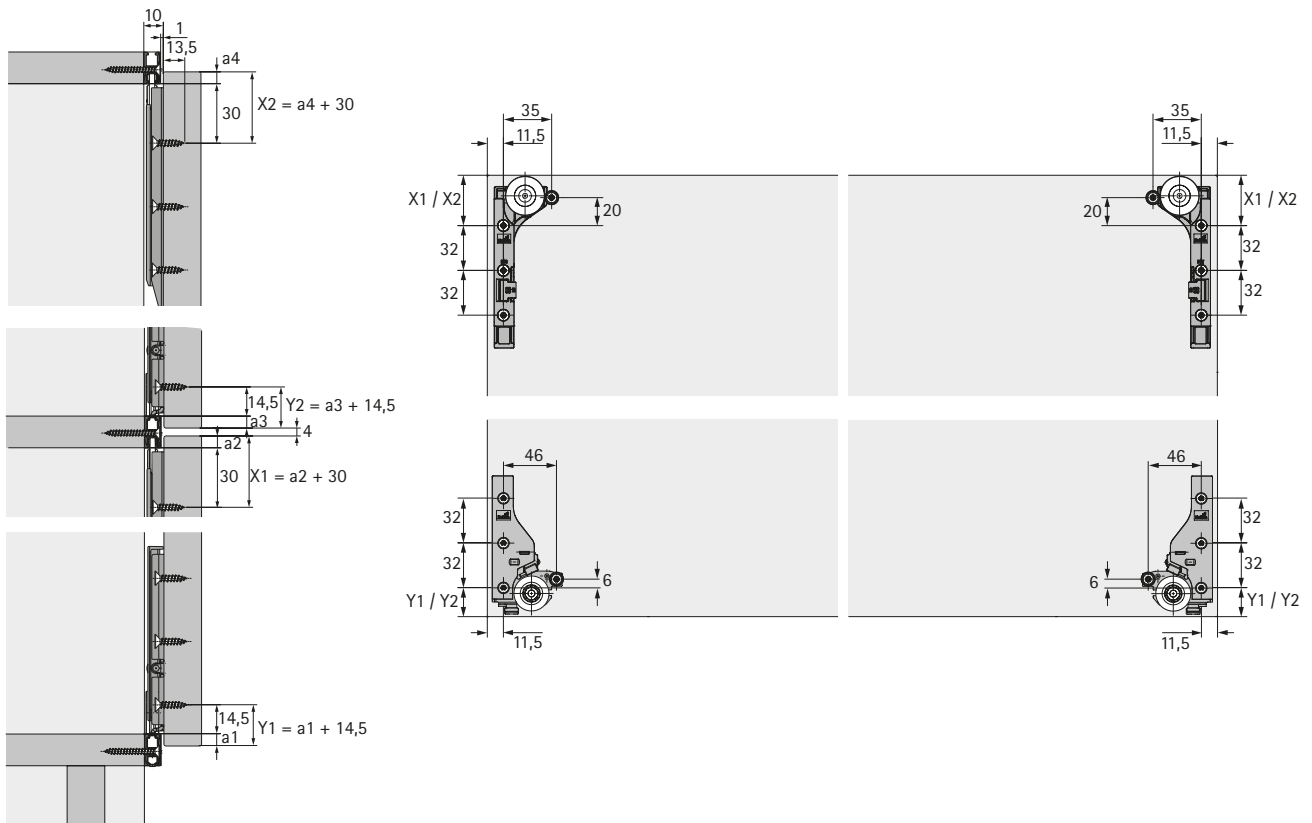
Sliding door system / bottom running

- ▶ SlideLine M / overlay door position
- ▶ Performance summary

Operating principle / SlideLine M with Silent System



Operating principle / SlideLine M without Silent System



- ▶ SlideLine M / overlay door position
- ▶ System components

Fittings set for doors with Silent System (soft closing, soft opening and soft colliding)



- ▶ Set contains all the components required for 1 wooden sliding door without Silent System or 55 mm aluminium profiles
- ▶ The fittings set can be used without an additional upgrade set
- ▶ Suitable sheet metal screws must be used for installing the running and guide components on the 55 mm aluminium frame

Set comprises:

- ▶ 2 running components with Silent System
- ▶ 2 guide components
- ▶ 2 activators
- ▶ 2 end stops, top
- ▶ 2 guide bushes
- ▶ 1 Silent System in colliding direction
- ▶ 1 1.5 mm hexagon socket spanner
- ▶ Fixing screws for wooden doors

Advice:

- ▶ Please order profiles separately (see page 218)

Door weight per door (max.) kg	Door type	Minimum door width mm	Order no.	PU
10	Wooden door, 55 mm aluminium framed door	450	9 201 921	1 set
30	Wooden doors, 55 mm aluminium framed door	450	9 156 338	1 set

Fittings set for doors without Silent System



- ▶ Set contains all the components required for 1 wooden sliding door without Silent System or 55 mm aluminium profiles
- ▶ The fittings set can be used without an additional upgrade set
- ▶ Suitable sheet metal screws must be used for installing the running and guide components on the 55 mm aluminium frame

Set comprises:

- ▶ 2 running components without Silent System
- ▶ 2 guide components
- ▶ 2 end stops, bottom
- ▶ 2 end stops, top
- ▶ 4 guide bushes
- ▶ 1 1.5 mm hexagon socket spanner
- ▶ Fixing screws for wooden doors

Advice:

- ▶ Please order profiles separately (see page 218)

Door type	Minimum door width mm	Order no.	PU
Wooden doors, 55 mm aluminium framed doors	300	9 156 339	1 set

- ▶ SlideLine M / overlay door position
- ▶ System components

Upgrade set for glue mounted glass doors with Silent System



- ▶ Set contains all the upgrade components required for glue mounting 1 glass sliding door with Silent System
- ▶ For use with 2-component adhesive
- ▶ Supplied without adhesive
- ▶ Mounting adapter material: zinc alloy to DIN EN 12844-ZP5

Set comprises:

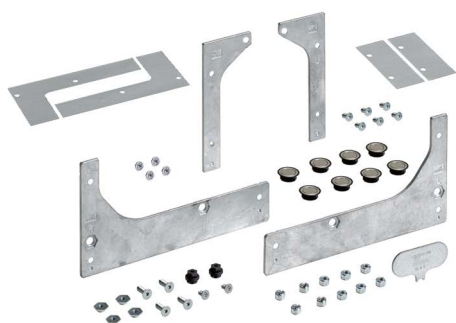
- ▶ 2 adhesive mounting adapters for guide components
- ▶ 2 adhesive mounting adapters for running components with Silent System
- ▶ 6 overrun strips
- ▶ 1 special tool

Advice:

- ▶ Please order profiles separately (see page 218)
- ▶ Fitting set for doors with Silent System must be ordered separately (see page 214)

Door type	Minimum door width mm	Order no.	PU
Glass sliding door	450	9 184 566	1 set

Upgrade set for screw mounted 6 mm glass doors with Silent System



- ▶ Set contains all the upgrade components required for screw mounting 1 glass sliding door with Silent System
- ▶ Suitable for 6 mm glass sliding doors

Set comprises:

- ▶ 2 screw on mounting adapters for guide components
- ▶ 2 screw on mounting adapters for running components with Silent System
- ▶ 8 discs for running and guide components, including washers, bushings and cover caps
- ▶ 2 guide bushes
- ▶ 4 cover films
- ▶ 1 special tool
- ▶ Fixing screws

Advice:

- ▶ Please order profiles separately (see page 218)
- ▶ Fitting set for doors with Silent System must be ordered separately (see page 214)

Door type	Minimum door width mm	Order no.	PU
6 mm glass sliding door	450	9 184 595	1 set

- ▶ SlideLine M / overlay door position
- ▶ System components

Profile sets: 2 profiles



- ▶ Profiles can be shortened as required
- ▶ If long enough, profiles can be cut into two and used as top and bottom runner profiles
- ▶ Coloured sets contain twice as many end caps

Set comprises:

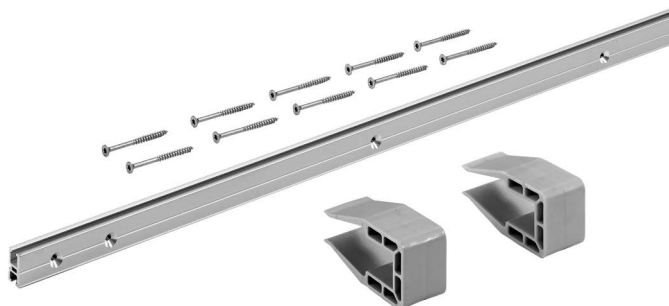
- ▶ 2 runner profiles, aluminium, silver anodized, predrilled
- ▶ 2 mounting clips
- ▶ Fixing material

Advice:

- ▶ Coloured sets for concealing the runner profiles with a coloured cover must be ordered separately (see page 219)

Profile height mm	Shelf thickness mm	Length mm	Order no.	PU
16	15,16	2500	9 209 165	1 set
16	15,16	4000	9 209 166	1 set
18	18,19	2500	9 209 167	1 set
18	18,19	4000	9 209 218	1 set
22	22	2500	9 209 219	1 set
22	22	4000	9 209 220	1 set
25	25	2500	9 209 221	1 set
25	25	4000	9 209 222	1 set

Profile sets: 1 profile



- ▶ Single profile set as upgrade for furniture applications with doors running across each other
- ▶ Profiles can be shortened as required
- ▶ If long enough, profiles can be cut into two and used as top and bottom runner profiles
- ▶ Coloured sets contain twice as many end caps

Set comprises:

- ▶ 1 aluminium runner profile, silver anodized, predrilled
- ▶ 2 mounting clips
- ▶ Fixing screws

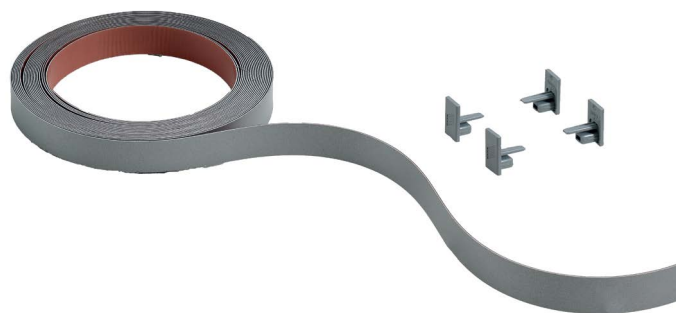
Advice:

- ▶ Coloured sets for concealing the runner profiles with a coloured cover must be ordered separately (see page 219)

Profile height mm	Shelf thickness mm	Length mm	Order no.	PU
16	15,16	2500	9 209 223	1 set
16	15,16	4000	9 209 224	1 set
18	18,19	2500	9 209 225	1 set
18	18,19	4000	9 209 226	1 set
22	22	2500	9 209 228	1 set
22	22	4000	9 209 229	1 set
25	25	2500	9 209 230	1 set
25	25	4000	9 209 231	1 set

- ▶ SlideLine M / overlay door position
- ▶ System components

Coloured sets for concealing the runner profiles with a coloured cover



- ▶ Set contains all the components required for concealing 1 runner profile with a coloured cover

Set comprises:

- ▶ 1 ABS decorative profile for sticking on
- ▶ 2 end caps
- ▶ 2 end caps (replacement)

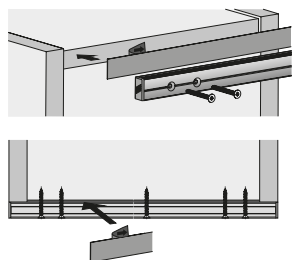
Advice:

- ▶ For each profile set: 2 profiles, please order 2 coloured sets separately
- ▶ For each profile set: 1 profile, please order 1 coloured set separately

Profile height mm	Colour	Length mm	Order no.	PU
16	silver	2500	9 209 232	1 set
16	silver	4000	9 209 268	1 set
16	black	2500	9 209 269	1 set
16	black	4000	9 209 271	1 set
16	white	2500	9 209 272	1 set
16	white	4000	9 209 273	1 set
16	champagne	2500	9 209 274	1 set
16	champagne	4000	9 209 275	1 set
18	silver	2500	9 209 277	1 set
18	silver	4000	9 209 278	1 set
18	black	2500	9 209 279	1 set
18	black	4000	9 209 280	1 set
18	white	2500	9 209 281	1 set
18	white	4000	9 209 283	1 set
18	champagne	2500	9 209 284	1 set
18	champagne	4000	9 209 285	1 set
22	silver	2500	9 209 286	1 set
22	silver	4000	9 209 287	1 set
22	black	2500	9 209 308	1 set
22	black	4000	9 209 309	1 set
22	white	2500	9 209 310	1 set
22	white	4000	9 209 311	1 set
22	champagne	2500	9 209 312	1 set
22	champagne	4000	9 209 313	1 set
25	silver	2500	9 209 399	1 set
25	silver	4000	9 209 400	1 set
25	black	2500	9 209 402	1 set
25	black	4000	9 209 403	1 set
25	white	2500	9 209 404	1 set
25	white	4000	9 209 405	1 set
25	champagne	2500	9 209 406	1 set
25	champagne	4000	9 209 407	1 set

- ▶ SlideLine M / overlay door position
- ▶ System components

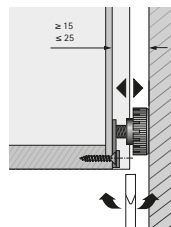
Spacer profile



- ▶ For use with set back shelves
- ▶ Prevents deflection of the runner profiles
- ▶ Simply sticks onto shelf between side and centre panels
- ▶ Positively connected solution without gap between shelf and profile
- ▶ Supplied on 15 m roll
- ▶ Easily shortened
- ▶ Thickness 1 mm
- ▶ Colour: grey

Profile height mm	Shelf thickness mm	Order no.	PU
16	16 - 19	9 200 421	1 ea.
22	22 - 25	9 200 422	1 ea.

Spacers



- ▶ For depth compensation in the lower section of the rear panel
- ▶ Depth compensation from 15 - 25 mm
- ▶ Self adhesive for easy installation; can be additionally secured by screws
- ▶ Plastic, black

Order no.	PU
0 020 784	1/100 ea.

