

## CONFIGURATIONS



Libell shelves, white



Libell shelves, anthracite

## DISTINGUISHING FEATURES



- Just a light pull on the handle brings the unit's contents down to eye level
- Maximises storage space for tableware, groceries and appliances
- A great solution for barrier-free kitchens and homes
- Built-in brake and soft-swinging mechanism for gentle movement with a minimum of effort
- Fixtures for clipping in Libell metal shelves or custom wooden shelves/trays
- Rotating adjuster for setting the brake/soft-swinging mechanism
- Shelf heights can be tailored to your needs
- Shelves can easily be removed for cleaning and clipped back into the frame

## OPTIONS



### Non-slip mat

This magnetic non-slip mat stops the unit's contents from sliding around.

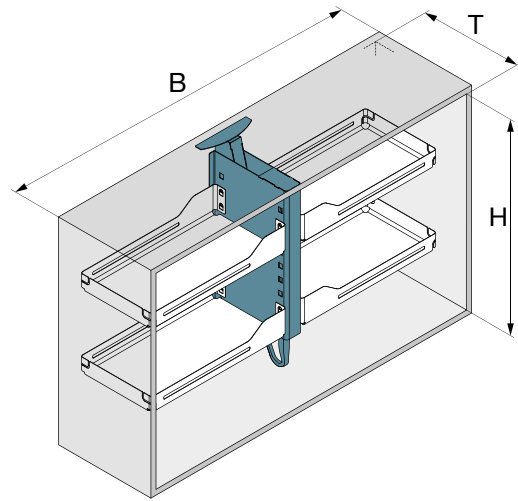


### Shelf support

This shelf support gives you the option of using custom shelves or wooden trays instead of Libell shelves.

## TECHNICAL ILLUSTRATION

|                           |             |
|---------------------------|-------------|
| <b>B= Unit widths</b>     | 900/1200 mm |
| <b>T= Interior depth</b>  | 285-330 mm  |
| <b>H= Interior height</b> | 660-946 mm  |





## Pegasus

Complete lift mechanism for wall cupboards

- Includes Softopen and Softclose
- No adjustment necessary

Load capacity:

Type 1 = 0 to 12 kg

Type 2 = 10 to 20 kg

| Type   | Surface    | Width | Depth | Height    | Art. No.    |
|--------|------------|-------|-------|-----------|-------------|
| Type 1 | white      | 60    | 280   | 660 - 946 | 500.0183.01 |
| Type 1 | anthracite | 60    | 280   | 660 - 946 | 500.0183.43 |
| Type 2 | white      | 60    | 280   | 660 - 946 | 500.0184.01 |
| Type 2 | anthracite | 60    | 280   | 660 - 946 | 500.0184.43 |

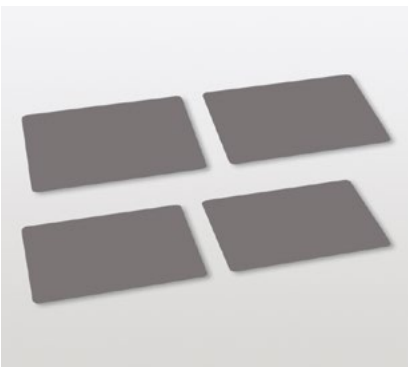


## Clip-on shelf set Libell

For Pegasus Type 1 and Type 2

Set includes 4 shelves

| Unit width | Surface    | Width | Depth | Height | Art. No.    |
|------------|------------|-------|-------|--------|-------------|
| 900        | white      | 355   | 267   | 92     | 500.0185.01 |
| 900        | anthracite | 355   | 267   | 92     | 500.0185.43 |
| 1200       | white      | 505   | 267   | 92     | 500.0187.01 |
| 1200       | anthracite | 505   | 267   | 92     | 500.0187.43 |



## Non-slip mat set magnetic

For the Libell clip-on shelf set for Pegasus

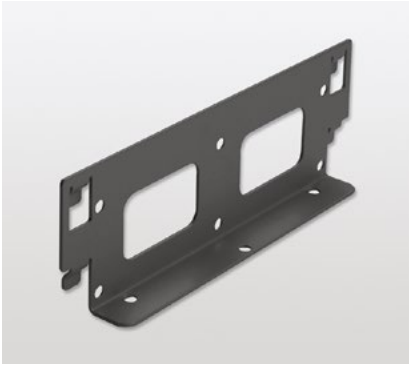
- Magnetic
- Easy to remove for cleaning

Set includes 4 mats

oyster white = for white shelves

walnut grey = for anthracite shelves

| Unit width | Surface      | Width | Depth | Height | Art. No.    |
|------------|--------------|-------|-------|--------|-------------|
| 900        | oyster white | 310   | 222   | 0.5    | 500.0219.57 |
| 900        | walnut grey  | 310   | 222   | 0.5    | 500.0219.56 |
| 1200       | oyster white | 460   | 222   | 0.5    | 500.0220.57 |
| 1200       | walnut grey  | 460   | 222   | 0.5    | 500.0220.56 |



## Tray support

For Pegasus type 1 and type 2

- For individual tray widths
- Different arrangement options for clip-on elements

Height of the clip on elements = max. 105 mm

|  | Surface    | Width | Depth | Height | Art. No.    |
|--|------------|-------|-------|--------|-------------|
|  | white      | 30    | 246   | 83     | 500.0188.01 |
|  | anthracite | 30    | 246   | 83     | 500.0188.43 |