





# LINERO MosaiQ

VERSATILE, VARIABLE AND EYE-CATCHING DESIGN

KESSEBÖHMER



# LINERO MosaiQ

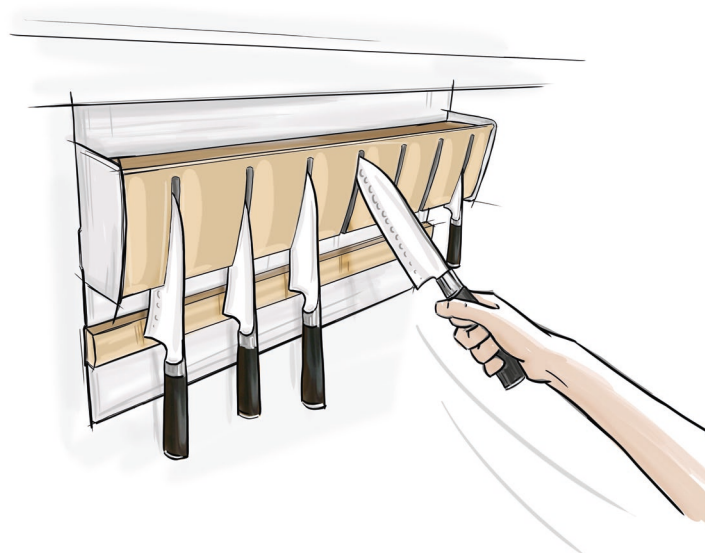
HUGE USER CHOICE, FINE DESIGN

KESSEBÖHMER





**THE NAME SUMS IT UP** – the new midway elements are yours to mix and match, like mosaic stones, along the elegant rail. The multi-functional, anodised aluminium rail is the basic element in this variable system. The many practical optional elements are hooked in above or below the rail and can be moved or rearranged whenever you want to. And of course, LINERO MosaiQ is compatible with Kesseböhmer's successful Linero 2000 System.







### **LINERO MosaiQ – RACTICAL AND ATTRACTIVE!**

The colours – graphite black and titanium grey – for the matt, tactile coating were chosen in consultation with experts at a well-known design institute. Décor inserts for the metal shelves come in a choice of wood finish or smoked glass.



**Graphite black with oak finish décor insert**



**Titanium grey with oak finish décor insert**

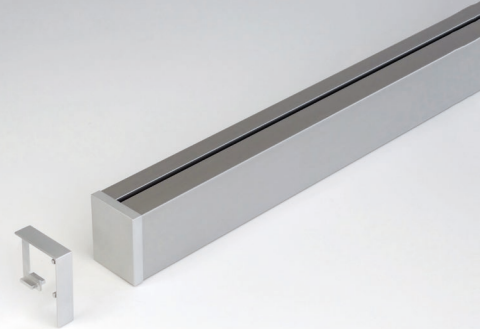


**Titanium grey with smoked glass décor insert**



**Graphite black with smoked glass décor insert**

	Dimensions (mm)	Product code
<b>Set aluminium rail</b>		
<b>LINERO MosaiQ</b>		
	BxDxH	
1 aluminium rail	600* x 32,9 x 41,5	<b>008900 9845</b>
2 end caps	900* x 32,9 x 41,5	<b>008901 9845</b>
1 connector	1.200* x 32,9 x 41,5	<b>008902 9845</b>
Fixing material to screw in placen	1.500* x 32,9 x 41,5	<b>008903 9845</b>
	1.800* x 32,9 x 41,5	<b>234951 9845</b>
Colour code:	*plus. 2 mm per end cap	
Stainless steel finish	9845	



<b>Universal shelf 140</b>		
<b>LINERO MosaiQ</b>		
	BxDxH	
	350 x 110 x 140	<b>008912 9843</b> <b>008912 9844</b>
Colour code:	Storage area:	
Titanium grey 9843	350 x 107	
Graphite black 9844		



<b>Universal shelf 200</b>		
<b>LINERO MosaiQ</b>		
	BxDxH	
	350 x 110 x 200	<b>008913 9843</b> <b>008913 9844</b>
Colour code:	Storage area:	
Titanium grey 9843	350 x 107	
Graphite black 9844		



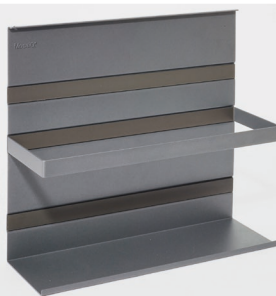
<b>Universal shelf 300</b>		
<b>LINERO MosaiQ</b>		
	BxDxH	
	350 x 110 x 300	<b>008914 9843</b> <b>008914 9844</b>
Colour code:	Storage area:	
Titanium grey 9843	350 x 107	
Graphite black 9844		



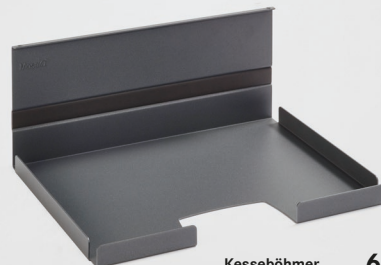
<b>Universal shelf 200 with railing</b>		
<b>LINERO MosaiQ</b>		
	BxDxH	
	350 x 110 x 200	<b>008918 9843</b> <b>008918 9844</b>
Colour code:	Storage area:	
Titanium grey 9843	350 x 107	
Graphite black 9844		



<b>Universal shelf 300 with railing</b>		
<b>LINERO MosaiQ</b>		
	BxDxH	
	350 x 110 x 300	<b>008919 9843</b> <b>008919 9844</b>
Colour code:	Storage area:	
Titanium grey 9843	350 x 107	
Graphite black 9844		



<b>Universal shelf DIN A4</b>		
<b>LINERO MosaiQ</b>		
	BxDxH	
	335 x 250 x 140	<b>008953 9843</b> <b>008953 9844</b>
Colour code:	Storage area:	
Titanium grey 9843	332 x 247	
Graphite black 9844		





**Product code**    Dimensions (mm)

**008927 9843**    BxDxH  
350 x 110 x 300  
**008927 9844**

Storage area:  
350 x 107

**Memoboard 300**

**LINERO MosaiQ**

Magnetic board and memo board  
(Universal shelf with write-on and wipe-clean  
glass back panel; use with magnets)

Colour code:  
Titanium grey    9843  
Graphite black    9844



**008908 9843**    BxDxH  
350 x 155 x 120  
**008908 9844**

**Paper roll holder**

**LINERO MosaiQ**

for paper towel rolls up to 295 mm wide

Colour code:  
Titanium grey    9843  
Graphite black    9844



**008909 9843**    BxDxH  
350 x 110 x 300  
**008909 9844**

**ROLLINERO foil dispenser**

**LINERO MosaiQ**

for rolls up to 330 mm wide

Colour code:  
Titanium grey    9843  
Graphite black    9844



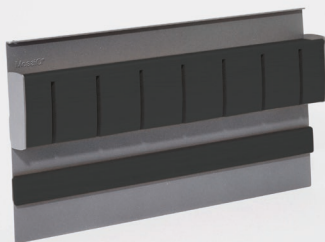
**008905 9843**    BxDxH  
350 x 45 x 200  
**008905 9844**

**Magnetic knifeholder**

**LINERO MosaiQ**

Finish: oak

Colour code:  
Titanium grey    9843  
Graphite black    9844



**008906 9843**    BxDxH  
350 x 45 x 200  
**008906 9844**

**Magnetic knifeholder**

**LINERO MosaiQ**

Finish: plastic, grey black

Colour code:  
Titanium grey    9843  
Graphite black    9844



**008910 9003**    BxDxH  
135 x 135 x 156

**Container/herb pot**

**LINERO MosaiQ**

incl. removable dividers  
Material: plastic, UV-resistant,  
lebensmittelecht und dishwasherproof

Colour code:  
White    9003



**008911 9003**    BxDxH  
116 x 115 x 56

**Dish**

**LINERO MosaiQ**

Material: plastic, UV-resistant, food safe  
and dishwasher proof

Colour code:  
White    9003



Dimensions (mm)      **Product code**

**Top-mounted towel rail**

**LINERO MosaiQ**

insert from above

BxDxH  
350 x 77 x 10

**008920 9843**  
**008920 9844**

Colour code:  
Titanium grey    9843  
Graphite black   9844



**Towel rail**

**LINERO MosaiQ**

insert from below

BxDxH  
350 x 77 x 46

**008921 9843**  
**008921 9844**

Colour code:  
Titanium grey    9843  
Graphite black   9844



**Double hook**

**LINERO MosaiQ**

Colour code:  
Titanium grey    9843  
Graphite black   9844

BxDxH  
85 x 44 x 38

**008922 9843**  
**008922 9844**



**Hook strip**

**LINERO MosaiQ**

Colour code:  
Titanium grey    9843  
Graphite black   9844

BxDxH  
250 x 44 x 38

**008923 9843**  
**008923 9844**



**Top-mounted shelf 235**

**LINERO MosaiQ**

insert from above

BxDxH  
235 x 107 x 8

**008924 9843**  
**008924 9844**

Colour code:  
Titanium grey    9843  
Graphite black   9844



**Top-mounted shelf 350**

**LINERO MosaiQ**

insert from above

BxDxH  
350 x 107 x 8

**008925 9843**  
**008925 9844**

Colour code:  
Titanium grey    9843  
Graphite black   9844



**Top-mounted shelf 585**

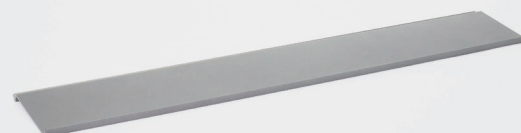
**LINERO MosaiQ**

insert from above

BxDxH  
585 x 107 x 8

**008926 9843**  
**008926 9844**

Colour code:  
Titanium grey    9843  
Graphite black   9844



**Decor insert oak**

**LINERO MosaiQ**

For all shelves of the relevant width

BxDxH  
235 x 106,5 x 4  
350 x 106,5 x 4  
585 x 106,5 x 4

**008928 0358**  
**008929 0358**  
**008930 0358**

Colour code:  
Oak                    0358



**Decor insert smoked glass**

**LINERO MosaiQ**

For all shelves of the relevant width

BxDxH  
235 x 106,5 x 4  
350 x 106,5 x 4  
585 x 106,5 x 4

**008931 0000**  
**008932 0000**  
**008933 0000**

Colour code:  
Other                    0000





# LINERO MosaiQ

NEVER BEEN MORE ATTRACTIVE

— KESSEBÖHMER —

**FOR MORE INFORMATION ON WOOD/METAL COMBINATIONS,**  
see Chapter 7: Fittings with wood.





MosaIQ®





# LED LIGHT STRIP

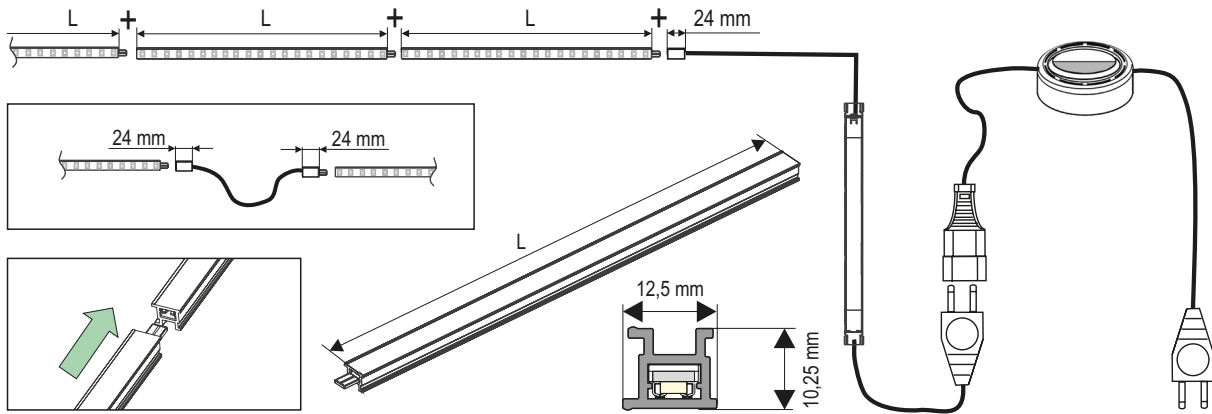
LIGHT UP YOUR LINERO MosaiQ

KESSEBÖHMER



WITH INTEGRATED LED LIGHT STICKS, THE MULTIFUNCTIONAL RAIL CASTS A NEUTRAL WHITE, INDIRECT LIGHT OVER THE MOSAIQ ELEMENTS. With a LINERO MosaiQ system in your kitchen (or bathroom) you can store stuff exactly where you want it. You can have cappuccino cups, a sugar shaker (or aftershave and a toothbrush) exactly where you need them and where they look good too. There's a place for your tablet, or your smartphone, or anything else you want to keep handy.

## Total length LED lighting



### LED-Stick

#### LINERO MosaiQ

Colour temperature: 4000 Kelvin (neutral White)

incl. diffuser

1.68 Watt

2.24 Watt

3.36 Watt

Dimensions (mm)

LxDxH

290 x 12,5 x 10,25

383 x 12,5 x 10,25

568 x 12,5 x 10,25

Product code

008935 0000

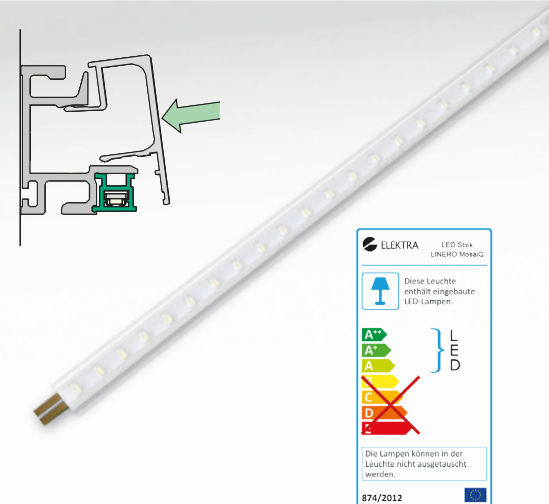
008936 0000

008937 0000

Easy installation: sticks can be seamlessly joined to create any length of lighting system

Colour code:

Other 0000



### LED power supply

#### LINERO MosaiQ

max. 20 Watt,

primary:100-240 Volt, 50/60 Hz

secondary: 24 Volt

incl. 3000 mm mains cable and

1800 mm LED connecting cable

**without switch**

(20 Watt is adequate for a LED strip with a maximum length of 3450 mm. Driver cannot be integrated in rail.)

BxDxH

280 x 20,5 x 15,5

EU plug

GB/UK plug

US/JP plug

AUS plug

008939 0000

008942 0000

008944 0000

008945 0000

Colour code:

Other 0000



### LED connector

#### LINERO MosaiQ

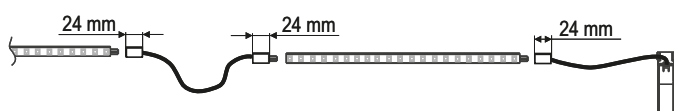
(stick to stick)

Optional component to connect two LED sticks flexibly, eg, around a corner

Length

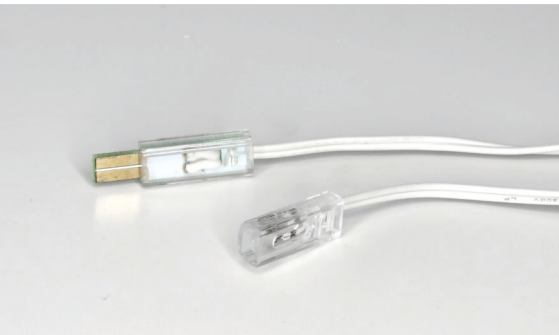
2.000 mm

008941 9003



Colour code:

White 9003



### Switch

#### LINERO MosaiQ

For 20 Watt driver, 230V/2.5A

66 Ø

008943 9003

One side:

flat 2-pin Europlug on 2000 mm cable

One side:

flat Euro connector on 2000 mm cable

Colour code:

White 9003





## eBoxx

### ONE BOX – MULTIPLE FUNCTIONS

KESSEBÖHMER

**TODAY'S KITCHENS HAVE TO MEET HIGH EXPECTATIONS. QUITE APART FROM THEIR CENTRAL FUNCTION – COOKING – INTELLIGENT AND UP-TO-DATE ENERGY AND SOCKET MANAGEMENT IS MORE AND MORE IMPORTANT.** It's the only way to cope with the escalating number of electrical appliances. In addition, digital media are moving into the kitchen in a big way. More and more people look up recipes on their tablets or smartphones.

The eBoxx is a practical response to all these demands. It provides extra sockets – that are easy to reach – and a secure place to stand a tablet or smartphone. It also locates and conceals LED splashback lighting components that are necessary, but not decorative. The LED driver, switch and cable are easily stowed out of sight in the eBoxx and the LINERO MosaiQ rail.







#### PRODUCT FEATURES

- Extra sockets: “you can never have too many sockets in your kitchen”
- Flexibility: the eBoxx can be positioned anywhere along the rail
- Retrofittable: saves the bother of laying cables under plaster
- A lot of technology integrated in one box: LED driver, sockets and cables neatly integrated in the rail and eBoxx
- Convenient sockets to charge tablets, smartphones, etc. The metal shelf provides secure storage.

Overall dimensions LED lighting with eBoxx = L + ... + L + S + L + ...

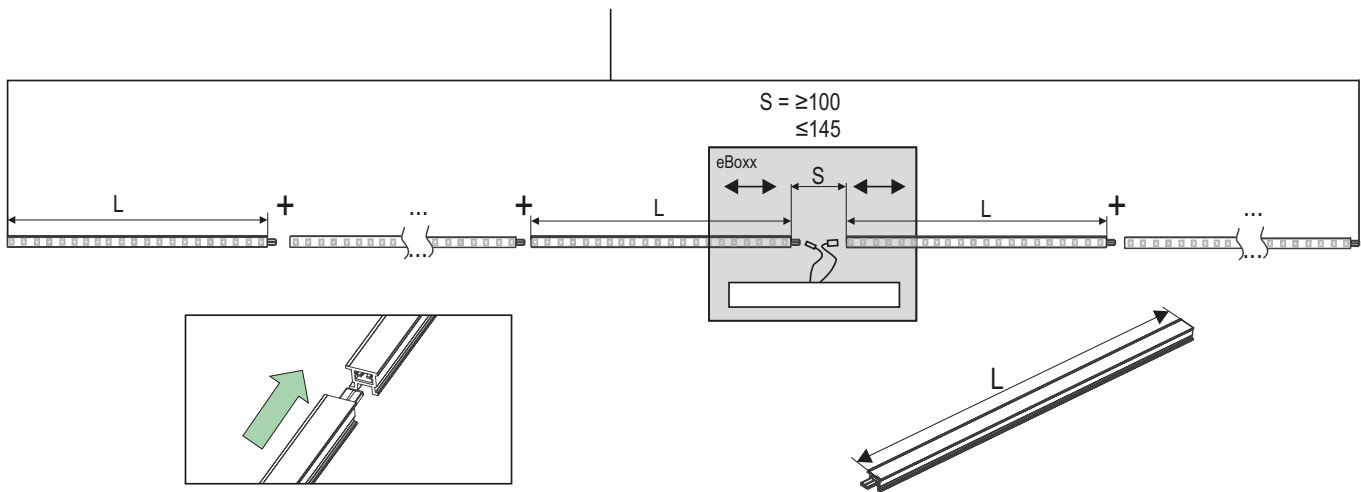


Fig.: Dimensions in mm

**Product code**      Dimensions (mm)

BxDxH  
165 x 92 x 139

**eBoxx set LED**

**LINERO MosaiQ**

For LED lighting for LINERO MosaiQ and 1 x socket

Country:

008934 9843

DE/ES

008934 9844

008955 9843

IT

008955 9844

008957 9843

FR/BE/PL/CZ

008957 9844

008959 9843

GB

008959 9844

008961 9843

AUS

008961 9844

008963 9843

USA

008963 9844

Consists of:

1x socket, earthed

1x switch for integrated LED driver

1x LED driver max. 30 Watt; 100-230 Volt,

50/60Hz, secondary 24 Volt

1 x power-in cable, twin + earth, 2 metres

1x secondary line with LED connector

(30 Watt is adequate for our LED lighting with a maximum length of 5100 mm)

**WARNING:** Open cable end of the power supply cable must be installed by a qualified electrician. Observe DIN VDE 0100.

Colour codes metal shelf:

Titanium grey    9843

Graphite black   9844

Plastic housing:

Titanium grey

**LED stick**

**LINERO MosaiQ**

Colour temperature: 4.000 Kelvin  
(neutral White) incl. diffuser

LxDxH

008935 0000

290 x 12,5 x 10,25

008936 0000

383 x 12,5 x 10,25

008937 0000

568 x 12,5 x 10,25

1.68 Watt

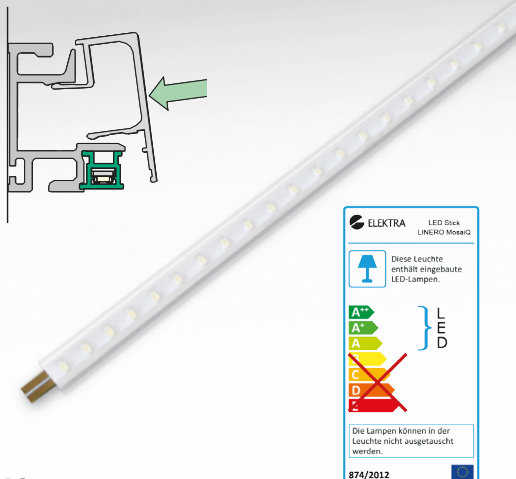
2.24 Watt

3.36 Watt

Easy assembly – link LED sticks using integrated plug&socket system to create variable LED length

Colour code:

Other    0000



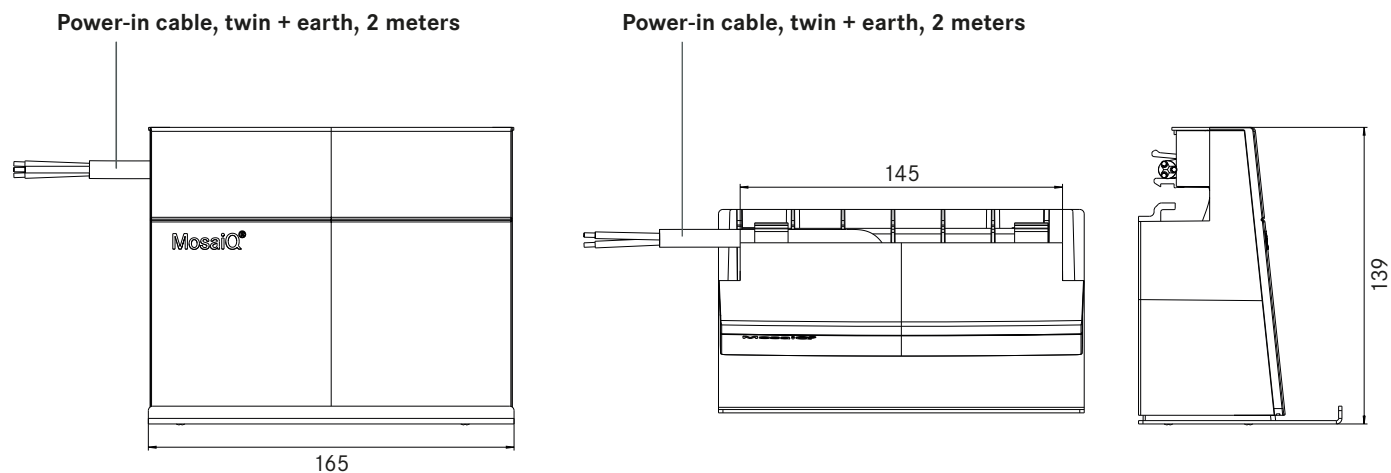


Fig: Dimensions in mm

	Dimensions (mm)	Product code
<b>eBoxx set sockets only</b>	BxDxH	
<b>LINERO MosaiQ</b>	165 x 92 x 139	
with 2 integrated sockets		
Consists of:	Country:	
2x socket, earthed	DE/ES	<b>008954 9843</b>
1x power-in cable, twin + earth, 2 metres		<b>008954 9844</b>
	IT	<b>008956 9843</b>
WARNING: Open cable end of the power supply		<b>008956 9844</b>
cable must be installed by a qualified electrician. FR/BE/PL/CZ		<b>008958 9843</b>
(Observe DIN VDE 0100.)		<b>008958 9844</b>
	GB	<b>008960 9843</b>
		<b>008960 9844</b>
Colour codes metal shelf:	AUS	<b>008962 9843</b>
Titanium grey 9843		<b>008962 9844</b>
Graphite black 9844		<b>008964 9843</b>
Plastic housing:	USA	<b>008964 9844</b>
Titanium grey		









# NO-DRILL FIXING:

## PowerMaxx

IDEAL FOR LINERO MosaiQ



**PowerMaxx** is the ideal no-drilling solution for attaching the LINERO MosaiQ rail to any smooth interior surface. The substrate must be smooth and even and capable of bearing the load – tiles, glass, wood, laminates, metals and many plastics.

PowerMaxx can be removed from almost any substrate without leaving any residues. Gluing instead of drilling makes installation far easier, but the connection is just as strong.

#### Product features:

- PowerMaxx for no-drill fixing – especially on glass splashbacks
- Simple, errorproof installation
- Ideal for retrofitting
- Removable with no residues
- Product MADE IN GERMANY

Product description	Tube contents	Atomiser contents
Product type	Glue	Activator and cleaning agent
Components	2-component	
Amount	One set is enough to glue on 1500 mm profile	
Load capacity	15 kg per metre	
Application temperature (short – up to 1 hour)	-40°C to 100°C (120°C)	

	PU	<b>Product code</b>
<b>PowerMaxx set</b> (for 1500 mm profile)	1 set	<b>008904 0000</b>

Consists of:

- 1x consumer package with euro slot hanger
- 4x positioning aids
- 1x 6-gram tube of adhesive
- 1x atomiser (cleaning agent/activator)
- 1x toothed spatula

Colour code:  
Other 0000





# LINERO MosaiQ SHELF SET

DESIGN YOUR OWN OPEN STORAGE SPACES

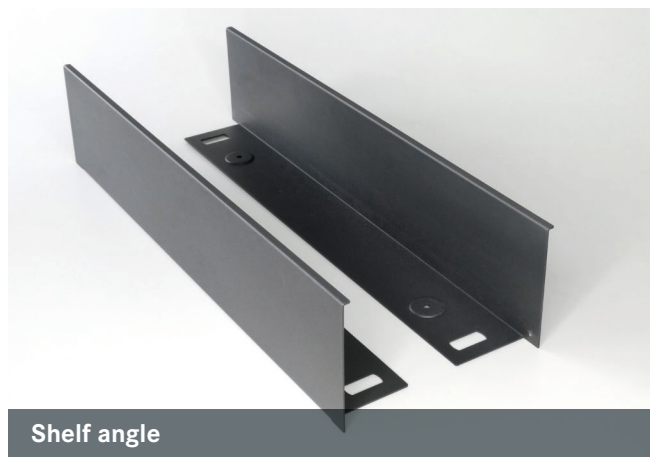
KESSEBÖHMER

**WITH THE LINERO MOSAIQ SHELF SET YOU CAN PUT A SHELF EXACTLY WHERE YOU NEED IT.** This is a stand-alone organizer element, optically related to the MosaiQ system, that can be put up anywhere. You choose the height (min. 160 mm) and the design of the 16°mm thick back panel. The back panel accommodates the hanging slots and links the two shelf elements to create a practical piece of furniture. The shelf elements are available in a choice of four widths and in colours toning with the MosaiQ system – titanium grey and graphite black.

## PRODUCT FEATURES

- Carries on the popular look&style of the LINERO MosaiQ midway system
- Simple, errorproof assembly and installation
- Individual choice of back panel decor
- Set pack: shelf angles top and bottom; Customers add their choice of back panel
- Ideal for kitchens and living areas





Shelf angle



Back panel

### LINERO MosaiQ shelf set

Consists of:

Top and bottom shelf angle

with holes for wall fixings

and screw holes for attaching the back panel

(Not included: back panel and wall fixings

Ø 35 mm)

Colour code:

Titanium grey 9843

Graphite black 9844

Dimensions (mm)

BxDxH

450 x 126 x 80

600 x 126 x 80

900 x 126 x 80

1.200 x 126 x 80

Product code

008965 9843

008965 9844

008966 9843

008966 9844

008967 9843

008967 9844

008968 9843

008968 9844

